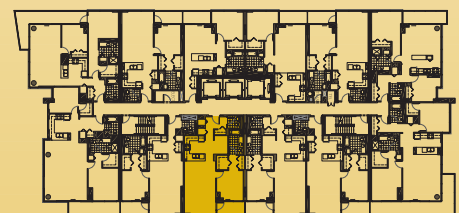
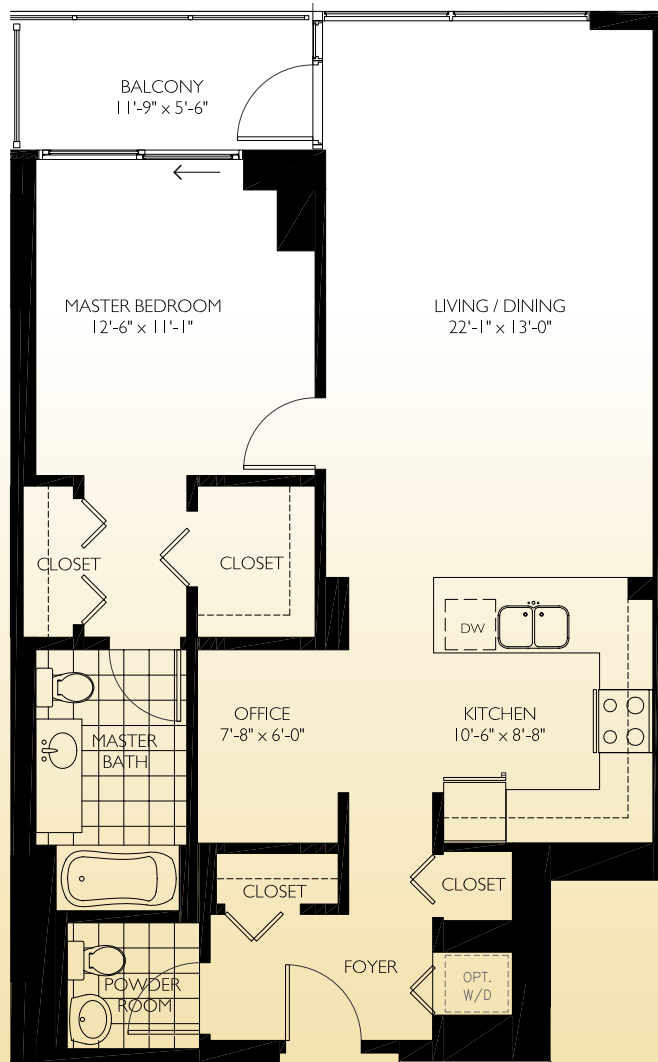


Plan 06

1 Bedroom Plus Office ■ 1.5 Baths

The Residences at
**Burnham
Pointe**



Terrapin Properties' policy of continual improvements in design and construction requires and reserves the right to discontinue floor plans or change any specifications, equipments, dimensions and prices without notice. Some features illustrated or described are optional at extra costs.

